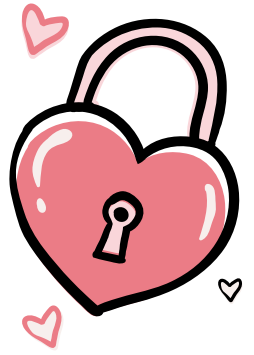


# Valentine's DAY CANDY DICE GAME



**How to play:** Each player starts with 4 pieces of candy. Place the remaining candies in the middle of the table. The youngest player gets to start first. Take turns rolling the dice. The first player to collect 10 pieces of candies, wins!

ASTORYBOOKDAY.COM



**Take 1 candy**



**Take 2 candies**



**Skip your turn**



**Give someone 1 candy**



**Take 1 candy from the person on your left**



**Put 1 candy back**

